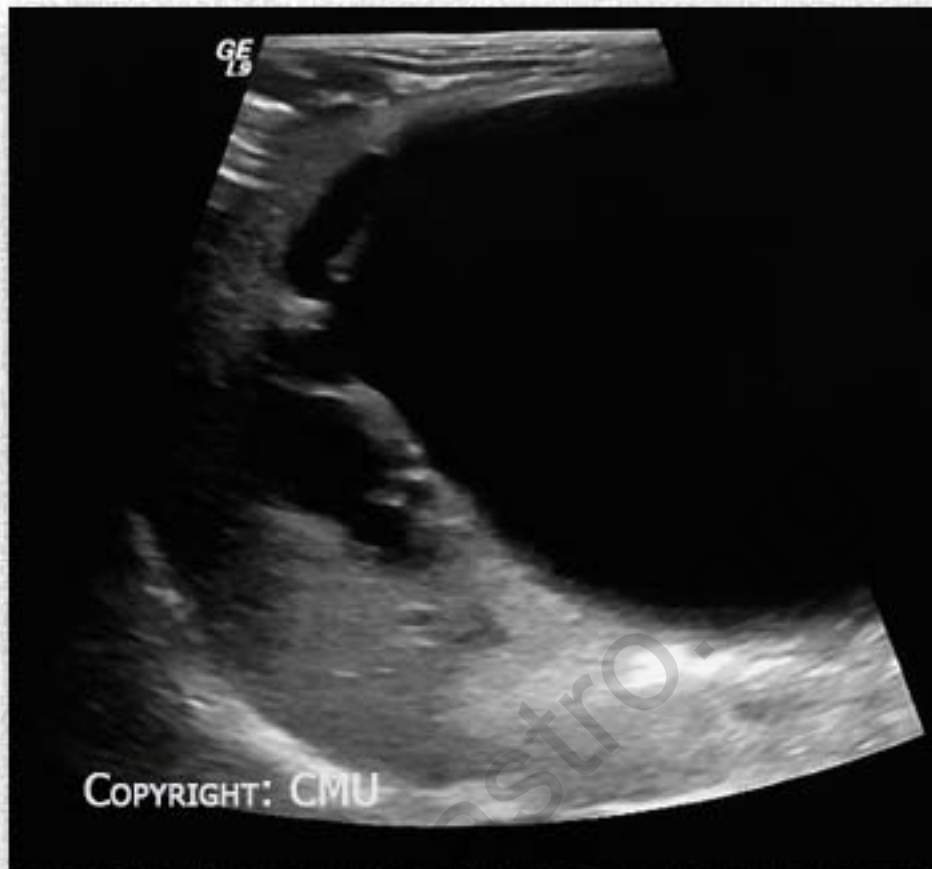


Clinical Quiz #25

A 2-month-old girl presents with prolonged jaundice and acholic stool. An ultrasound shows as below:



**What is your diagnosis?**  
[Click for answers](#)

Contributed by Nuthapong Ukarapol, Chiang Mai University

## Clinical Quiz # 25

**Diagnosis: Choledochal cyst type I .** This patient also has a palpable tense-cystic abdominal mass. The initial labs show prolonged coagulograms which are corrected by intravenous vitamin K. The patient is scheduled for cystectomy with Roux-en-Y hepatico-porto-enterostomy.

Pthaigastro.org